

TURTLE TIDBITS

VOLUNTEER NEWS, OPPORTUNITIES,
AND APPRECIATION



It's turtle time! This painted turtle was crossing the barn road, and no, I didn't ask her why. 😂

WHAT'S HAPPENING

Growing for US

Trainings/Events
See dates below

Bat Research
opportunities

Recap:
Volunteer
Appreciation
Week
City Nature
Challenge

Wow, what a rollercoaster of a spring! We went from a solid week of 30F night temps, to immediate humid 85F days. That was a rough transition when growing and planting hundreds of natives, but with your help we did it, and continue to keep growing. Growing native plants with LRWP serves so many purposes. We are sharing plants with the community, using them to restore our preserves, as well as beautify surroundings for our neighbors. But it's all for US, to build habitat for people to explore, for pollinators and the whole food web to feed on or nest in, and to restore that most important building block-our soil. Aly is taking every opportunity to engage kids and adults who visit the marsh in this process, continuing to plant the deep roots of our mission in future generations. We hope you understand the impact you have in our community, and on us personally, as you help with our Seed to Marsh programming and restoration with LRWP.

Guidelines for LRWP Volunteers during Covid 19

At LRWP we want to ensure that volunteers understand our **top priority is minimizing risks to the safety and health of our community**. These guidelines will be fluid and change to reflect the most recent recommendations at both the state and federal

level. We ask that you take the precautions that are best for you and your friends/family. There is no volunteer task that is worth the risk of spreading the virus.

State recommendations can be found here: [**https://www.coronavirus.in.gov/**](https://www.coronavirus.in.gov/)

DO ask about any risk that may be associated with the task and **DO NOT** take part if you feel uncomfortable with the risk level.

Covid Guidelines

Effective June 1, 2021

The following guidelines are encouraged at all times:

- Face Masks are encouraged but not required
- Social distancing is recommended

Breakfast on the Marsh will resume in person at Indiana Wesleyan University in July

- Face Masks are encouraged but not required
- Social distancing is recommended
- LRWP will not be providing food at this time - please bring your own bagel and cream cheese or other snack if you would like
- LRWP WILL be offering coffee and tea
- We recommend that you bring your own reusable cup or glass

Please do not hesitate to reach out to LRWP staff with questions or concerns about volunteer or public safety.

Maraiah Russell: Preserves and Programs Steward m.russell@lrwp.org 260-918-7119

Betsy Yankowiak: Director of Preserves and Programs b.yankowiak@lrwp.org

What's happening at the wetlands



Preserve Steward interns Eva (left) and Sydney (right) assist with Turtle Research



LRWP Volunteer Deanne Zepp gave a great lesson on Hoosier Riverwatch



Volunteer Bonnie has been putting a fresh coat of paint on our trail markers!



Volunteer Jan has been helping Aly with Seed to Marsh programming, here she's teaching the class how to transplant milkweed seedlings

What's happening at the wetlands



Golden Alexander is one of the first wildflowers to bloom



A community group is spotted using Aly's Turtles of Eagle Marsh coloring book for a lesson at the Towpath Trailhead



It was an overcast day, but volunteers still learned a lot about butterflies from John Brittenham of Blue Heron Ministries



LRWP and community volunteers came together to plant natives along the Towpath Trail, where residents of Coventry Meadows can enjoy the view as well as trail users

Stewardship Snapshot



Protip: You can identify, and record the location of any poison hemlock at the same time by using the app iNaturalist!

Poison hemlock is one of the first invasive plants we target for removal at the preserves. It is very toxic and sheep, cattle, swine, horses, and other domestic animals are poisoned by eating small amounts of green or dried plant. It is also extremely poisonous to humans. All parts of poison-hemlock (leaves, stem, fruit, and root) are poisonous. We prioritize removal for these reasons, and to prevent the spread of the seeds via our ditches/waterways, which is a common source of hemlock populations. Our lead preserve steward Don is vigilant in this regard, being keenly aware of our responsibility to prevent the spread of invasives.

Purdue Extension has a great information sheet on this plant for more info:

<https://www.extension.purdue.edu/extmedia/fnr/fnr-437-w.pdf>

You're invited to the Plant Swap!

Add to your garden the frugal way
Plant Swap lets you give and get extra natives

What: Native plant swap

When: Saturday, June 12, 11am - ? (until no plants remain)

**Who: INPS-NE chapter members and Little River Wetlands
Project volunteers**

Where: Barn at Eagle Marsh, 6801 Engle Road, Fort Wayne

Have some extra bee balm you can spare? Or how about a redbud seedling? Some purple coneflower popping up? Sure you do! Pot it up, then join the INPS NE Chapter for our annual plant swap, which always turns out to be so much fun--and you end up learning a lot about interesting natives from the experts, the people who grew the plants.

How it works

Pot up your extra natives and label them so that people will know what they are. Native plants only, but cultivars will be accepted, as long as they're clearly marked. Upon arrival, participants will draw numbers. The person who draws the lowest number starts and gets their top choice of plant, then the next person, etc. Each person will get as many turns as plants they have brought.

What to bring

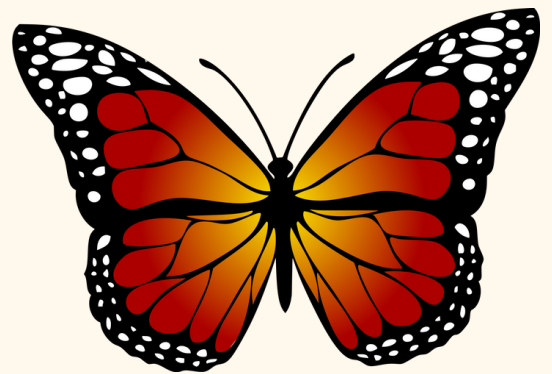
Bring your plants, clearly tagged. You will also need to bring a mask, gloves and any drinking water you may want. You may want to make notes, so a pen and pad may also be handy. Come join us for a fun morning of plant swapping, and take home some beautiful new additions to your garden!

Volunteer Appreciation Week

April 18-24

If you're not on social media, you may have missed our big thank you to all LRWP volunteers for everything you do for the community. Here are pictures that we posted throughout the week on Facebook. AND, a wonderful volunteer named Neil even created these graphics for us to use!

#LRWPvolunteersarethebest



Our volunteers are our light.
each and every one of you, thank you.

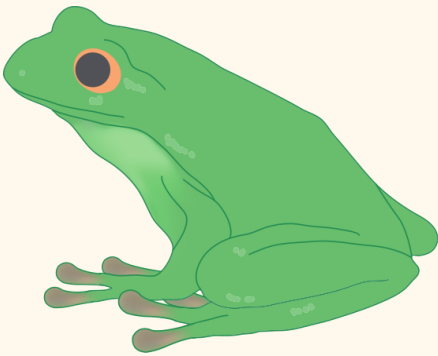




Our volunteers inspire us.



Thank you for making LRWP a better organization.

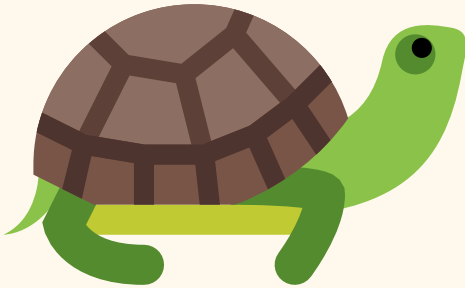
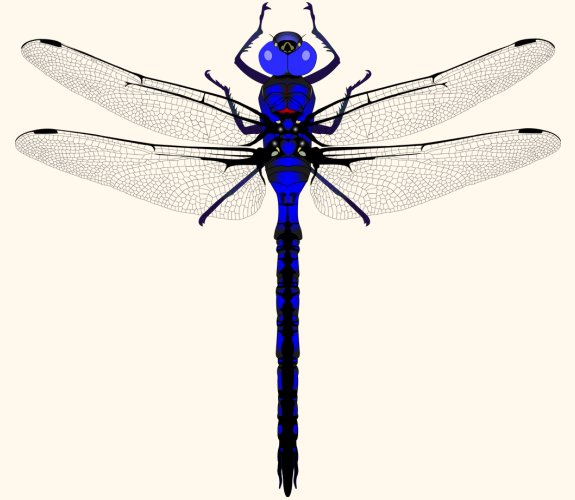


We love our volunteers!



Volunteer Appreciation Week

April 18-24



Our Mission

Our mission is to restore and protect wetlands in the historic watershed of the Little River, a major tributary of the Wabash River, and to provide educational opportunities that encourage good stewardship of wetlands and other natural ecosystems.

THANK YOU for all you do to further this mission!

Events/Trainings



LITTLE RIVER WETLANDS PROJECT INVASIVE SPECIES TRAINING

WITH INPS REPRESENTATIVE
FREYA BERNTSON, MNRS
THURSDAY JUNE 10TH, 2021
6:00 - 8:00 PM
EAGLE MARSH BARN



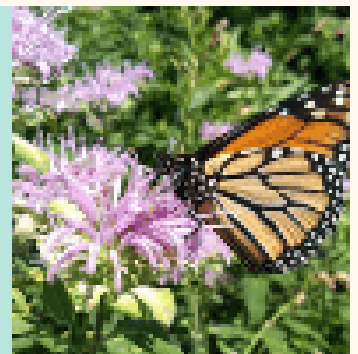
LITTLE RIVER WETLANDS PROJECT INVASIVE SPECIES TRAINING

WITH INPS REPRESENTATIVE
FREYA BERNTSON, MNRS
SATURDAY, JUNE 12TH, 2021
9:00AM - 11:00 AM
EAGLE MARSH BARN



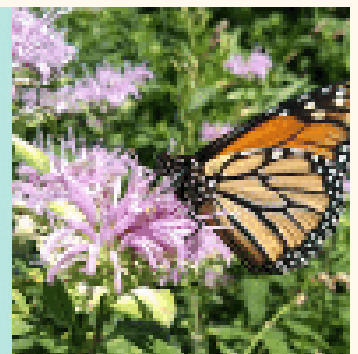
Monarch Monitor Training Thursday June 17, 6-8pm Eagle Marsh Barn

Join a team of LRWP volunteers that check weekly for monarch adults, caterpillars, and eggs at Eagle Marsh and our Arrowhead Preserves, or collect data at your own home! This is part of the community science project Monarch Larva Monitoring Program through the University of Minnesota.



Monarch Monitor Training Saturday June 19, 10am-Noon Eagle Marsh Barn

Join a team of LRWP volunteers that check weekly for monarch adults, caterpillars, and eggs at Eagle Marsh and our Arrowhead Preserves, or collect data at your own home! This is part of the community science project Monarch Larva Monitoring Program through the University of Minnesota.



Conservation Research: Bat Research Night Thursday, June 24 8-9:30pm Eagle Marsh Barn

Join PFW professor Dr. Scott Bergeson and his team as they give a talk and demonstration of the bat research being conducted at Eagle Marsh, Fox Island and other natural areas around Fort Wayne.



Do you enjoy the night shift? If so, check out this opportunity to help Dr. Scott Bergeson and his crew set up mist nets, document bats found, and even apply transmitters to endangered bats!

Check out dates, times, and locations at this Signup page: [**https://signup.com/go/fizLnWb**](https://signup.com/go/fizLnWb)



City Nature Challenge Results!

This global community science challenge was a hit again this year, and we are proud of all the work local partners, LRWP staff and volunteers put into this event. Check out the project page to see **what was found! [Fort Wayne Area CNC](#)**

LRWP volunteers were once again leaders in the competition, see stats below!



Most Observations

1st

pmcafee 187



angieq 147



clconroy 126



lindsey150 87



janesieber 76



benofwestwoodfairway 73



Most Species

1st

angieq 114



pmcafee 107



clconroy 90



benofwestwoodfairway 51



janesieber 47



lindsey150 39

Tidbits

- Please track your hours as you volunteer for community science, stewardship, trail work, individual projects, etc. These hours are important to us and the community!
- Want to join our private Facebook group just for volunteers? Search "LRWP Volunteers" in the Facebook search, and request to join! This group is for sharing photos, info, and other fun tidbits about our preserves with fellow volunteers.

Thanks!

Volunteers have given in so many ways recently! Forgive me if I don't list them all, there are just too many to count.

- Watering the native plants around the barn and in the hoop house
- Working outreach at community events on behalf of LRWP!
- Donating wood, pots, etc.
- Creating and sharing social media, plant information pages, and other educational materials
- Leading and assisting with Ramblers hikes, public hikes, and public programming
- Collecting quality data for community science projects
- Being leaders among our volunteer groups, mentoring other volunteers, and sharing your passion
- Keeping our trails mowed, and clean
- Growing natives at home with our seeds and bringing them back for restoration or sharing with the community
- Taking beautiful photos of our wildlife and sharing them



Trail 5/Continental Divide Trail is still closed to the public at the moment. The grass needs time to really take root so it can sustain the spring hiking flurry! It got a bit of a slower start, and we've had some difficulty keeping hikers off this trail. We'll let you know as soon as it's ready for foot traffic. Until then please enjoy the alternative trail that was mowed parallel to the berm and connects with Trails 6 & 7, which are still pretty dry right now!

Preserves have become a popular destination, and sometimes people unknowingly (or knowingly) disobey our preserve rules.

What should you do if you are concerned about this?

Call or text Betsy! 260-341-6368

We don't allow: Pets, hunting, fishing, biking, motorized vehicles, horseback riding, alcohol, drugs, weapons, camping, campfires, and all collecting.

Never put yourself in harms way, you do not need to approach people who are breaking the rules.

If you ever feel threatened, unsafe, or concerned for the safety of others **call 911**

Stewardship

The early warm weather has really got us busy! We're starting to hold weekly stewardship events again, and have a lot of special projects for anyone wanting to work alone or in a small group. Email me for more details!



Garlic Mustard Pull

Friday June 4

8:00 am

Office: 5000 Smith Rd



Seedling Transplant

Tuesday June 8

5:00-7:00 pm

Eagle Marsh Barn



Volunteer for independent work:

- **Transplanting seedlings**
- **Newsletter editor**
- **Callery pear removal at Arrowhead Prairie**
- **Work glove inventory**