

TURTLE TIDBITS

VOLUNTEER NEWS, OPPORTUNITIES,
AND APPRECIATION



Foxglove beardtongue
Penstemon digitalis
One of the first blooming
wildflowers in the spring

WHAT'S HAPPENING

Volunbeering!

2/6/20 Thursday

6-8 pm

Hop River Brewing Co

Community Science Trainings

See dates and times
below

Annual Spring Cleanup and Volunteer Kickoff

4/18/20 Saturday

9am-Noon

Earth Day Fort Wayne

4/26/20 Sunday

1-5pm

Seed to Marsh is GROWING!

We've been preparing all winter, and now it's time to start sprouting! Read more about this program below....



Volunteers Jan, Libby, Dan, Emrah, and Mark work together on cleaning the fluffy seeds of New England Aster (*Symphyotrichum novae-angliae*) THANK YOU!

Volunbeerin!

Thurs 2/6/20 6-8pm

Hop River Brewing Company

1515 N Harrison St

We'll be part of the fun for 260 Day, the celebration of the Northeast Indiana region!

Come out and mark the occasion by helping us to prepare 260,000 seeds for germination! This is an all ages, family friendly venue, and this event is open to the public.

Find us online!

Keep up with LRWP events on our website and social media!

[Facebook](#)

[Instagram](#)

www.lrwp.org

Contact me if you aren't on our private volunteer facebook page and you'd like to be.
m.russell@lrwp.org



LITTLE RIVER
WETLANDS PROJECT



HOW DO I

VOLUNBEER?

**Volunteer with
Little River Wetlands Project
while
Sharing a Beer with Friends**

All ages welcome!

1st Thursday of the month • 6-8pm
• Hop River Brewing Company

Seed to Marsh

Growing With The Community

We're onto the next phase in our Seed to Marsh efforts, **germinating!** Seeds are being distributed to our growing partners, and their students and volunteers are going to sow them into flats of soil that will live in their greenhouse for the next few months. Cross your fingers with us that they all sprout! **LRWP volunteers** will be assisting them along the way, teaching them growing methods for success.

This greatly increases our growing capacity, and increases community involvement in our efforts. Some of these plants will then come back to the marsh, and some will go to **Habitat for Humanity** to use in landscaping their new houses! From our habitat to theirs, spreading native seeds of change, this program is truly inspiring. **Thank you** for making this possible, you have helped every step of the way.

Seed to Marsh Growing Partners

Canterbury High School

Carriage House

Concordia High School

Wayne High School



Gary collecting
Wild White Indigo Seeds
Baptisia alba



Barb, Martha, Jess, Ashley, Gary, and Jesse
collecting seeds Fall 2019

Preserve Stewardship Opportunities

Become a Preserve Steward and help our stewardship crew with various activities that help our native plants thrive. This is a very neat way to get to understand what restoration actually involves and really get to know our preserves – off the trail. Dates and times vary, and are communicated via email. There is typically an opportunity once per week.

Email Maraiah to get on the list! m.russell@lrwp.org

- remove invasive species
- transplant seedlings
- native plantings
- trail creation, maintenance
- seed gathering,
- seed cleaning/stratification
- assisting Seed to Marsh growers
- trash pick-up



Will transplants seedlings into larger pots, so they can grow bigger before planting at the marsh



Beth helps plant natives grown in our hoop house, along Trail 8

Volunteer Kick-off Breakfast

Annual Spring Clean-up

We're kicking off the volunteer season in a new way this year! We'll provide a pancake and sausage breakfast around the fire at Eagle Marsh Barn, with time to chat with fellow volunteers and learn what activities the coming season holds. Then, we'll provide an immediate opportunity to earn volunteer hours at our Annual Spring Clean-up. This is a much needed trash pick-up around Eagle Marsh and help us spruce up the preserves for Earth Day Fort Wayne. Bring your appetite, and any tools that might be helpful in the cleanup. Attend one event, or both. Bring along anyone interested in volunteering! Hope to see you there.

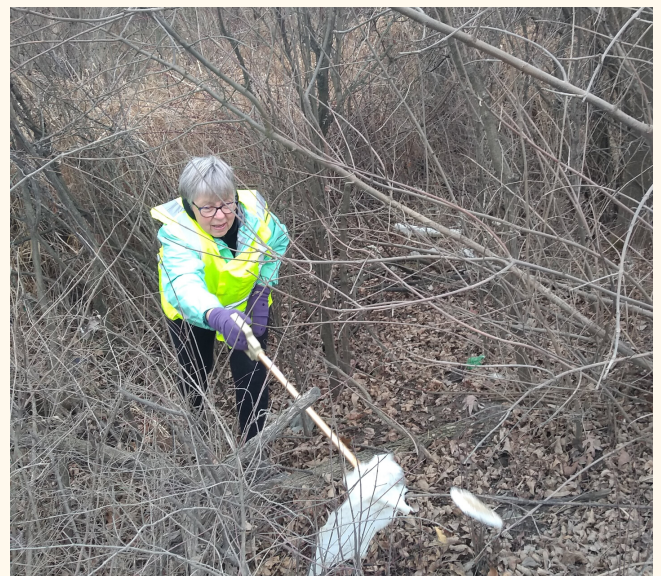
Volunteer Kick-off Breakfast

4/18/20 Saturday
9-10 am



Annual Spring Clean-up

4/18/20 Saturday
10 am-Noon



**Kathleen helps pick up trash
with her handy grabber!**

LRWP Community Events

We need you!

Our large community events require over a hundred volunteers each. These special festivals are free and open to the public, and are very important in spreading the word about protecting natural areas. Your help is needed for everything from set-up to engaging the public at our education stations. Event dates are listed below, and as we get closer to the event, a link to sign up will be sent out and posted on our social media. Groups of volunteers are welcome. Want to attend the event? Volunteer for a 2 hour shift, and then enjoy the event with family and friends!

**Earth Day Fort
Wayne
4/26/20 Sunday
1-5 pm**

**Urban Turtle Festival Weekend
6/7/20 Sunday
1-5 pm**

**Monarch Festival
9/13/20 Sunday
Noon-5pm**



**Leslie inspiring a young guest at
Monarch Festival 2019**

NestWatch Training

3/14/20 Saturday

10am-Noon

LRWP Office 5000 Smith Rd

Have you noticed the bluebird boxes located around the trails? Have you ever taken a moment to watch who's coming and going? Join us for Nest Watch Training and learn how to safely check on and record what's happening in those boxes! This data will be submitted to Cornell University's NestWatch community science project. This training will focus on the smaller bluebird nest boxes, so no wading necessary! You can also participate by monitoring nests in your own backyard. Learn more at their website:

<https://nestwatch.org/>

This training will be led by experienced volunteer and Master Naturalist Nancy Kilduski.

If you are interested in signing up for this training contact Maraiah:

m.russell@lrwp.org or 260-478-2515 x 105



Nancy demonstrates how
to monitor a nest box at
Eagle Marsh

iNaturalist Training

Learn how to document the wildlife found at our preserves, and participate in the first **Fort Wayne Area City Nature Challenge!**

3/7/20 Saturday

10am-Noon

LRWP Office 5000 Smith Rd



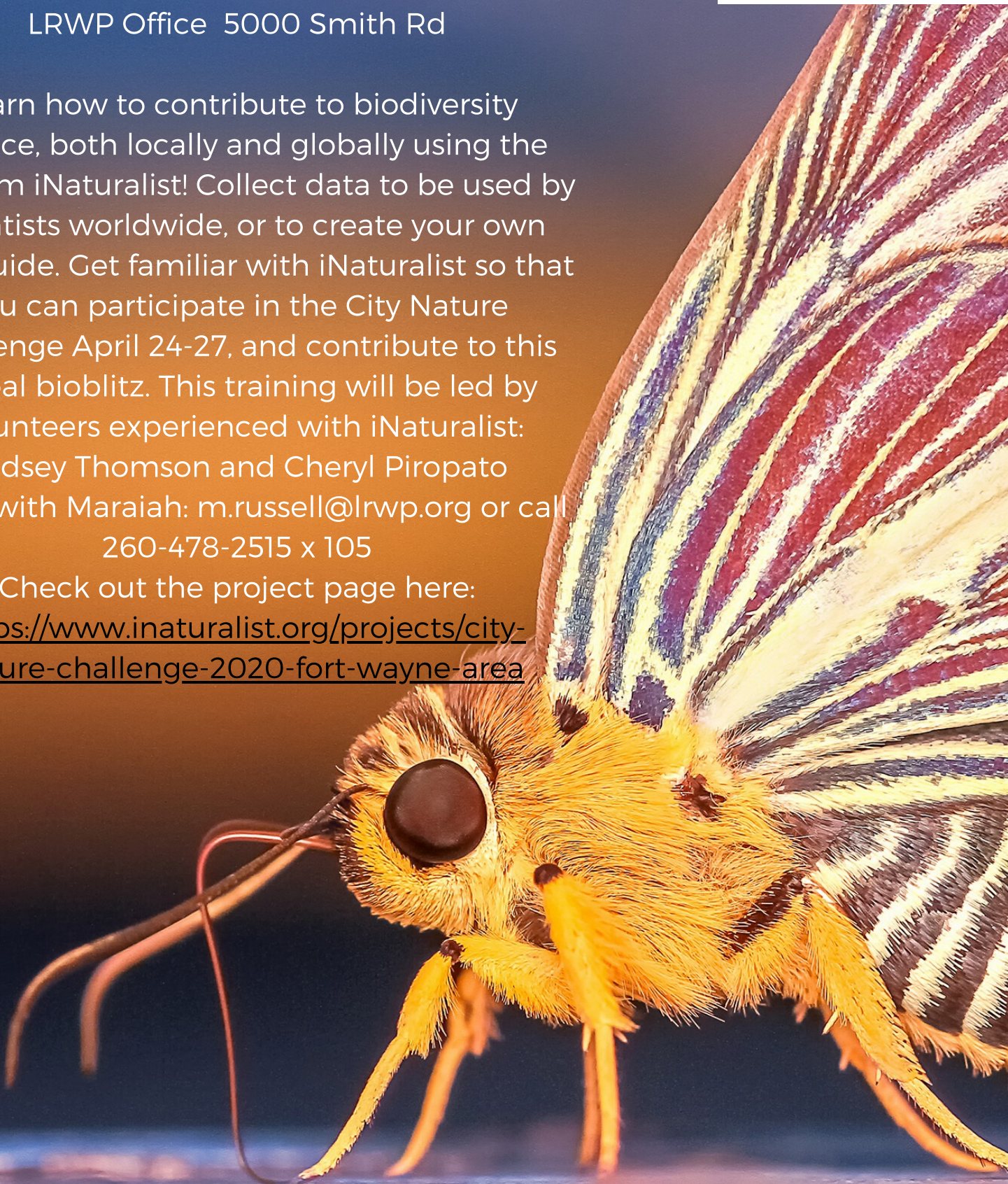
Learn how to contribute to biodiversity science, both locally and globally using the platform iNaturalist! Collect data to be used by scientists worldwide, or to create your own field guide. Get familiar with iNaturalist so that you can participate in the City Nature Challenge April 24-27, and contribute to this global bioblitz. This training will be led by volunteers experienced with iNaturalist:

Lindsey Thomson and Cheryl Piropato

RSVP with Maraiah: m.russell@lrwp.org or call 260-478-2515 x 105

Check out the project page here:

<https://www.inaturalist.org/projects/city-nature-challenge-2020-fort-wayne-area>



Monarch Monitor Training

6/20/20 Saturday

10am-Noon

Eagle Marsh Barn 6801 Engle Rd

Join a team of monitors that check weekly for monarch adults, caterpillars, and eggs at Eagle Marsh and Arrowhead Preserves. This is part of the community science Monarch Larva Monitoring Program through the University in Minnesota. Check out their project here:

<https://monarchjointventure.org/mlmp>

This training will go over how to identify different monarch life stages, how to monitor and how to submit your data. Weekly monitoring occurs between July and September and substitute monitors are available to help during vacations, etc.

This training will be led by experienced volunteers

Kathleen Silliman and Jenny Ratzlaff

Please RSVP to Maraiah: m.russell@lrwp.org

260-478-2515 x 105



Invasive Species Training

**Classes taught by Freya Berntson, experienced in
invasive species management at LRWP, Heartland
Restoration, and working towards a MS in Ecological
Restoration**

Part 1

6/10/20 Thursday

6-8 pm

**LRWP Office 5000 Smith
Rd**

**In this indoor training,
you will learn to identify
invasive species known
to be on our properties
and where the
infestations are. Learn
the best methods for
removal for each
species.**

**RSVP with Maraiah:
m.rusell@lrwp.org
260-478-2515 x105**

Part 2

6/13/20 Saturday

10 am-Noon

Eagle Marsh 6801 Engle Rd

**This field training will
build on what was
learned in Part 1 by
examining first-hand the
invasive species we
encounter at Eagle Marsh.
This training will sharpen
your abilities to identify
species in the field and
differentiate them from
possible look-a-likes.**

Our preserves are your preserves!

Our mission is to restore and protect wetlands in the historic watershed of the Little River, a major tributary of the Wabash River, and to provide educational opportunities that encourage good stewardship of wetlands and other natural ecosystems.

Thank you for your part in making this mission possible. Every act of volunteerism counts, and we are grateful for every contribution.

